

DONAUREGIONEN+



The Spatial Development Concept of Interregional Cooperation in the Danube Space

4th Workshop Report

Elaborated by ERDFPP1, ERDFPP5 and LP:
Institute of Spatial Planning
Self-Government of Pest County
Ministry of Construction and Regional Development of the Slovak Republic

March 2010

Jointly for our common future



Table of contents

1. Introduction	3
2. Workshop preparation.....	3
2.1. Confrontations with project partners.....	3
3. Program of workshop	3
Date: 17th March 2010, Wednesday, 9,00-16,00 hours – 1st Day.....	3
Date: 18th March 2010, Thursday, 9,00-14,30 hours – 2nd Day.....	5
4. Course of Workshop and summary report	6
4.1. Opening and introduction	6
4.2. WP1 - Transnational project management and coordination	6
4.3. WP1, WP2 - Methodology, Communication and Dissemination	6
4.4. Progress of the WP3, WP4 and WP5	7
4.5. Starting the 6 th Work Package.....	7
4.6. 3rd Meeting of the Project Steering Committee	8
4.7. Work Package 7	8
4.8. Working in Groups	8
5. Conclusion and recommendation of 4th Workshop.....	9
6. Conclusion of 1st Meeting of the Project Steering Committee	11
7. Annexes (presentations & reports).....	12-42

1. Introduction

Fourth Workshop of Donauregionen + project, with the aim of to present the current state of semi-finished work of each workpackages (WP), was held on 16th - 17 March 2010 in Budapest. The place of the workshop was the Art'otel Budapest (www.artotels.com/hotels/hunbuart) and County Hall, Budapest. On the workshop there were presented, discussed and adopted concrete materials governing the process of project running.

2. Workshop preparation

2.1. Confrontations with project partners

The aim of the 4th workshop was to discuss about the current status of the project, to show the results of 1st reported period as well as to discuss about the next work of each project partner.

3. Program of workshop

Date: 17th March 2010, Wednesday, 9,00-16,00 hours – 1st Day

Place: Art'otel Budapest, Budapest, Hungary

08,30 – 09,00 – Registration

1. 09,00 - 09,10 – **Opening and introduction**
+ Opening (welcome word, objectives and tasks of the workshop) – ERDF PP5
+ How the workshop will be organized – ERDF PP5
2. 09,10 – 09,30 – **Progress Report, Application for Reimbursement**
+ Presentation – LP
3. 9,30 – 9,50 – **ADMAN report**
+ Presentation – LP
4. 9,50 – 10,00 – **Discussion**
+ Discussion – LP and PPs
5. 10,00 – 10,20 – **Presentation of the final methodology**
+ Presentation – ERDF PP1
+ Discussion – LP and PPs
6. 10,20 – 10,40 – **Progress of the WP2**
+ Presentation – ERDF PP1
+ Discussion – LP and PPs

10,40 - 11,00 – Coffee break

7. 11,00 – 11,30 – **Progress of the WP3**
 - + Presentation – ERDF PP1
 - + Discussion – LP and PPs

8. 11,20 – 12,20 – **Progress of WP4 before the finalization (GS), specification of the indicators in the basic time levels**
 - + all coordinators of GS refer about the situation in their specific GS
 - Natural conditions – ERDF PP1
 - Settlement structure and human resources - ERDFPP8
 - Transportation and technical infrastructure - 10%PP5
 - Economy - ERDFPP7
 - + Discussion – LP and PPs

9. 12,20 – 12,40 – **Progress of WP5, changes of values of indicators in the future, and time levels**
 - + Presentation – ERDF PP7
 - + Discussion – LP and PPs

13,00 - 14,00 – Break

10. 14,00 – 15,00 – **Discussion about the problems of the WP's**
 - + WP3 moderator ERDF PP1
 - + WP4 moderator ERDF PP9
 - + WP5 moderator ERDF PP7
 - + WP6 moderator ERDF PP1
 - + WP7 moderator ERDF PP1

11. 15,00 – 15,30 – **Evaluation of the work sections**
 - + Conclusion – Moderators of sections

12. 15,30 – 16,00 – Discussion – Members of PSC

16,00 – End of the 1st Day

Date: 18th March 2010, Thursday, 9,00-14,30 hours – 2nd Day

Place: County Hall, Budapest, Városház utca 7., Hungary

13. 9,00 – 9,30 – ***Crossdanube strategy development (CSD)***
+ Presentation – ERDF PP1
+ Discussion – LP and PPs
14. 9,30 – 10,15 – ***Introduction of the model CDR Komarom-Komarno, methodology***
+ Presentation – ERDF PP1
+ Discussion – LP and PPs
15. 10,15 – 11,00 – ***Introduction of the model CDR Komarom-Komarno, implementation***
+ Presentation – ERDF PP4
+ Discussion – LP and PPs
16. 11,00 – 11,45 – ***Introduction of the model CDR Komarom-Komarno, SWOT analysis***
+ Presentation – ERDF PP7
+ Discussion – LP and PPs
- 11,45 – 12,30 – Coffee break
17. 12,30 – 13,30 – ***Case study of the determination of the area of CDRs***
+ Presentation – ERDF PP1
+ Discussion – LP and PPs
18. 13,30 – 14,00 – ***Workflow of the WP6***
+ Presentation – ERDF PP1
+ Discussion – LP and PPs
19. 14,00 – 14,30 – ***Task force, deadlines, responsibilities***
+ Presentation – LP
20. 14,30 – 14,40 – ***End of the 4th Workshop***

4. Course of Workshop and summary report

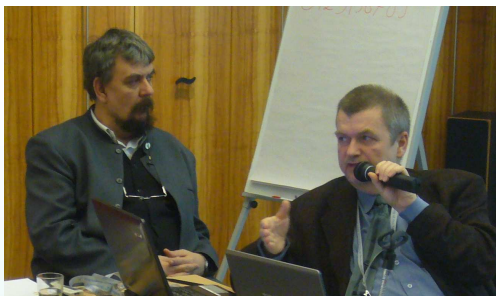
4.1. Opening and introduction

The fourth workshop of the Donauregionen + project was opened by Mr. Attila Bognar, representative of The Self-Government of Pest County, Budapest. He welcomed all guests concerned and wished them successful and useful discussion.

4.2. WP1 - Transnational project management and coordination

In this section the representative of Lead Partner (LP) Mr. Tibor Németh made a presentation in which summarized the administration and coordination activities, realised from the third workshop. He also reminded the project partners need to develop the 2nd Partner Report and the verification of expenditure First Level Control. Then the certified Partner Report should be submitted to the LP no later than 20.5.2010. The last point of the presentation was the introduction of the planned activities, tasks and meetings for the coming period.

4.3. WP1, WP2 - Methodology, Communication and Dissemination



Another point was the final presentation to the methodology of the project presented by Mr. Julius Hanus. He briefly summarized the status of semi-finished work of each work packages (WP). He reminded to WP2 that the design manual is in the final version and asked the project partners if they have any comments or suggestions, send them to partner responsible for coordinating WP2 - ERDF PP1. In WP3 - Information support for the project, he said it is a challenging task because the project involved eight countries, each with its own specifications for GIS (geographic information system). In addition to GIS within the WP3 there will be a web site - www.donauregionen.net and yet a pilot web portal in which it is possible to enter data online. Finally, he highlighted the importance of the web pages and web portal, because of the great number of project partners from many countries the internet is a suitable way of communication. The methodology for WP4 - WP7 is still in preparation. For tasks of WP4 and WP5 there was created an online form on web portal mentioned above. He also noted that the deadline for completion of the work for WP4 - analysis of the project - is approaching. The methods for WP5 prepare ERDF PP1 with ERDF PP7. At the end of a brief presentation he introduced the main activities and the main results of the WP4 - WP7.

4.4. Progress of the WP3, WP4 and WP5



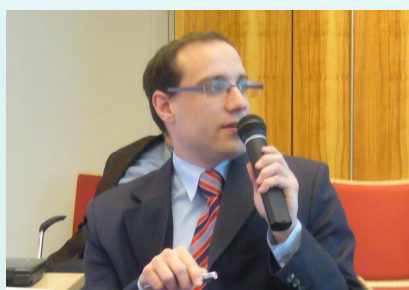
In this section,- WP3 - Information support for the project, Mr. Baláž Ales, representative of ERDF PP1, had presentation. He said that the biggest obstacle in creating a united geographic information portal is that each individual project partners work with various GIS formats. Therefore he asked partners to follow the instructions which were presented and explained to each partners.

Responsible partners briefly expressed the data and the progress of work on WP4 for each GS. The output of WP4 will be a total report for the whole Danubian region and for each GS as well as the completed online application form for each NUTS3 region.

Presentation to WP5 - the development of sectoral strategies, was presented by Mr. Lajos Veres. He said detailed guidelines - a sequence of steps to be taken to fulfil the mission. As he said, this methodology is in line with EU policies. He underlined pay attention to the choice of indicators, which development will follow and pursuant to that development will be subsequently set up development strategies for different types of regions. By using evaluation methods it will be possible to calculate the impact of existing measures and projects for the selected indicators. For those areas that appear to be less progressive will specify new measures to improve the indicator to the desired level. An important task will be to identify the external (development directions, key stakeholders, competitors) and internal (endogenous resources, present strategies, institutions) factors of development of the region. Another important activity will be the identification and involvement of relevant institutions to cooperation.



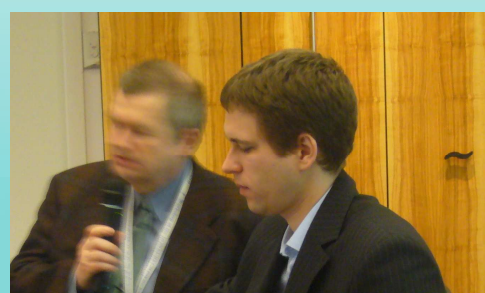
4.5. Starting the 6th Work Package



In this block there were presented 4 presentations. The first was the presentation of Mr. Márton Lendvai on the theme: A case study of applications for WP5 methodology for region Komárom-Esztergom. He described the whole process of methodology application, including the calculation of current and future values of the indicators of regional development. To calculate the data for this purpose have been taken the value from the project

Donauregionen 2006-2008.

The second was the presentation of Mr. Pavol Petrík: Case study on application of methodology WP5 for Nitra Self-governing region. Like in the previous presentation he also described in



detail the procedure works by gathering data to calculate the final value of the various indicators.

Mr. Peter Tomasek presented the next entry with presentation: Methodology WP6. In his presentation he presented a comprehensive methodology for developing Crossdanube strategies. The first task in WP6 will be to define and delineate the various Crossdanube regions. Then they will be identified by the key actors of regional development in the region. Their representatives together with experts will create working group and they will identify weaknesses and opportunities for further development of the region. The WP6 will used the same method of evaluation indicators as in WP5, whereby there will be taking into account only measures with cross-border impact. Based on the calculated values of indicators and identified and proposed measures will set potential scenarios for development of Crossdanube regions.



The last in this thematic block was a presentation of Mr. Márton Lendvai – Crossdanube region Komárom - Komarno. He briefly stated application of methodology for this Crossdanube region.

4.6. 3rd Meeting of the Project Steering Committee

During the 4th Workshop there was held the 3rd meeting of Project Steering Committee (PSC), on which were discussed administrative matters of the project. The results of the meetings were recorded in the minutes of the 3rd PSC meeting.

4.7. Work Package 7

Mr. Vojtech Hrdina informed participants of workshop about the tasks associated with the WP7. In his presentation briefly outlined the steps and timetable of work to develop an overall strategy for Danube region.

4.8. Working in Groups

In this unit the program was to work in groups. They created two working groups - first, in which project partners discussed the challenges and progress in WP3 and second, to address issues related to WP4 - WP7. The results of both working groups are set out in the Conclusions and Recommendations adopted at the 4th workshop.



5. Conclusion and recommendation of 4th Workshop

WP1

- Next workshop will be done on 2nd and 3rd of June in Bucharest with these conditions (LP/ERDF PP9):
 - Minimum 2 nights for each participants,
 - Paying at arrival,
 - Possible list of participant till end of March 2010.
- Deadline for submitting the 2nd Partner Report and Declaration of Validation is the 20th May 2010 (all partners).
- Preparation of the 4th workshop report till and of March 2010 (ERDF PP1/ERDF PP5/LP).
- Sending all e-mails in copy to donaregionen@gmail.com.
- Working meeting between LP, ERDF PP1, ERDF PP5 and 10% PP8 (10% PP 6,7) in Vukovar in Croatia on 30.03.2010-
- Working meeting between LP, ERDF PP1, ERDF PP5 and 10% PP5 (10% PP6 in Novi Sad) in Belgrade in Serbia on 27.04.2010.
- Working meeting between LP and ERDF PP9 in Bucharest in Romania on 11.05.2010.
- 1st CDR workshop SK-HU 15.-16.04.2010 in Slovakia in Podbanské (LP, ERDF PP1-7).

WP2

- Elaboration of program of the 1st proposal for the 1st project conference in Budapest in 02/2011 – till end of April 2010, responsible LP, ERDFPP1 (comments by all partners).
- Elaboration of the yearly project report, responsible LP, ERDFPP1 (comments by all partners).

WP3

- Group of GIS experts agreed that for the need of GIS database and specifically of the model of transport accessibility each partner (responsible for geodatabase) will provide topologically correct road and railway networks till end of May 2010.

WP4

- Text parts of the General Schemes on the basis of national contribution – it is necessary to send to the coordinators the national contributions till end of April 2010.
- GIS part of the general schemes on the basis of national contribution– it is necessary to send to the coordinators the national contributions till end of April 2010.
- Data at NUTS3 level on the WEB project portal – end the data collection to the end of April 2010.
- The coordinators should to send the templates for the data, text and GIS to the national project partners – members of the PSC till end of March 2010.
- The portal should be ready for accessing the data by all the relevant partners till end of March 2010.
- On 5th workshop in Bucharest the draft final reports of the GSs should be presented by coordinators of GSs.

WP5

- The WP5 methodology and it application of the nuts3 regions of Komárom-Esztergom and Nitra counties was presented.
- The time schedule of further WP5 was presented and accepted in a way that for the next workshop all the partners will be able present the application of the methodology on at least of one region per country.
- The ERDF PP7 will finalize the guide of methodology and send it to the partner till end of March 2010 and will be given to the portal.

WP6

- All Slovak and Hungarian partners will propose and verify the detailed methodology including:
 - Definition of the specific area of CDRs,
 - Procedure of the CDR strategy development on the basis of the outputs of
- WP5 (guideline and trainings),
- Setting up of the working groups (CDR Komárno – Komárom, potentially Esztergom-Štúrovo) and organizing of the 1st joint meeting).
- At the 5th workshop in Bucharest the outputs according the point 21. will be presented by PP1 and PP7

WP7

- Task for all partners – to give comment to the WP7 working procedure.
- Task for all partners – give proposal for the members of the task force of WP7.


6. Conclusion of 1st Meeting of the Project Steering Committee

Attended:

1. LP – Tibor Nemeth – Chairman
2. ERDF PP1 – Julius Hanus – SVK
3. ERDF PP5 – Attila Bognar – HU
4. ERDF PP8 – Mariana Nikolova – BG
5. ERDF PP10 – Ramona Cruceru – RO
6. 10% PP1 – Viorel Miron – MD
7. 10% PP2 – Mariia Tanasenko – UA
8. 10% PP5 – Tijana Zivanovic – SR
9. 10% PP8 – Mariana Balic – CRO

1. The Croatian member was changed by reason of change of the contact person of 10%PP8.
2. The Lead Partner presented the situation about the problems of preparation of the next 2 workshops – 5th WS in June in Romania (Bucharest) and 6th WS in September in Serbia (Novi Sad).
3. The PSC discussed about the possibilities to having these WS.
4. The PSC asks the LP to try to organize the workshop or project meeting in Bucharest so that the project activities could be in line with the project Action Plane – until end of March 2010.
5. The PSC asks the ERDFPP8 for the final decision concerning the organizing the workshop in Bulgaria September 2010 – exchange the 6th and the 9th workshop – until end of March 2010.
6. PSC approved the all administrative, managing activities incl. the deadlines to the next PSC meeting:
 - a. Deadline for the submitting the Partner Report – approved or non-approved – by relevant PSC members to the LP - 20th May 2010,
 - b. Deadline for the submitting the Declaration of Validations – by relevant PSC members to the LP – 20th May 2010
 - c. Dates of all Controlling and Coordination Meeting proposed by LP,
7. PSC asks Project Partners to observance all deadlines which are proposed in the conclusion of the 4th Workshop.
8. The next regular PSC meeting should be on the next workshop or project meeting.

A - General Processes of the Project - ADMAN




General Processes of the Project

(Administrative and managing procedures – ADMAN rules)
status from the 3rd Workshop till 17.03.2010 and the following rules

4th Workshop - of the DONAUREGIONEN+ project
17th – 18th March 2010
Budapest, Hungary
Tibor Németh

Jointly for our common future



Meetings

There were „only“ 2 CCMs (Controlling and Coordination Meetings) between the LP and PP:


1. Kishinev – 10%PP1, 8-10.2.2010
2. Bukurest – ERDFPP9, 11.-12.2.2010

The main topics of this meeting were:

- Activities in WP's
- Sponsoring
- GIS data
- Reporting

Jointly for our common future

17th – 18th March 2010 4th WORKSHOP - BUDAPEST donoregionen+ 2



Periods and Reporting


Periods:

-2nd Project Period was from 01.09.2009 to 28.02.2010

- 3.1 Project Period from 1.3.2010-31.05.2010 was started!!

Jointly for our common future

17th – 18th March 2010 4th WORKSHOP - BUDAPEST donoregionen+ 3



Periods and Reporting - past

- 1st Progress Report and the 1st Application for Reimbursement (on-line) were submitted on 30.11.2009 and by post 15.12.2009
- 1st check by JTS in January 2010 – administrative changes in Declaration (wrong projet code), financial (ERDFPP7)
- corrected 1st PR and the 1st AoF (on-line) were submitted on 05.02.2010
- 2nd check by JTS in February 2010 – administrative changes in Declaration (wrong projet code), financial (ERDFPP8)
- LP will prepare the 2nd correction of the 1st PR and the 1st AoR – within 30 days,
- we will have to hope that the 3rd check will be without any problems and finally approved by JTS

Jointly for our common future

17th – 18th March 2010 4th WORKSHOP - BUDAPEST donoregionen+ 4




Periods and Reporting - future

- 2nd Reporting Period is from 1.3.-31.05.2010 (3 months),
- to prepare the 2nd Partner Reports (from all PP) and Validation of Expenditures (from ERDFPP – it depends also on FLC),
- 2nd Progress Report and the 2nd Application for Reimbursement (on-line) must be submitted on 31.05.2010,

Jointly for our common future

17th – 18th March 2010 4th WORKSHOP - BUDAPEST donoregionen+ 5



Periods and Reporting - future

Main rules for ERDF PP:

1. it was sent to you pre-prepared Partner Report for the 2nd Period
 - partly filled the Main data
 - partly filled the Financial Report - table 5.1 - your new budget after the 1st budget reallocation (relevant only for ERDFPP1, ERDFPP7 and ERDFPP10), table 5.2 - with your Previously Validated sums on the basis of your 1st Declaration.
 - partly filled the part 2.5 - only for those partners who had a budget changes. **BUT - don not report any other financial changes into this section - your next financial changes must be approved by PSC!!!**
2. update your contact date in part Main data - if there were some changes - report them in part 2.5
3. fill all other relevant part in section 3, 4 and 5
4. if you will have problem with the filling the indicator, don not be afraid. The important will be the indicators in Progress Report.
5. project don not have revenues!
6. your activities in WPO - Project Preparation which was done in past and already reported in the 1st Partner Report - don not have to be reported once again - use the text according the PPR_sample_WPO
7. **the partner report after you filling must be sent to your relevant PSC member, that means the partner report before the validation**
8. after the validation by FLC (first level control) send your validated partner report also to your PSC member
9. the PSC member must immediately sent the collected PR to the LP - non-validated and validated!
10. the deadlines: fill your PR as soon as possible and send it to your FLC in time (until end of March) so that your validated PR with Declaration were received by LP in time - not later **then 20.5.2010!!!**
11. if any questions ask your FLC body and LP
12. if already started with the filling the PR, no problem. Only check the financial part of your PR with this.

Main rules for 10%PP:

1. very simply - fill the pre-prepared form and send it your relevant PSC member
2. the PSC member must immediately sent the collected PR of 10%PP to the LP

Jointly for our common future

17th – 18th March 2010 4th WORKSHOP - BUDAPEST donoregionen+ 6



Next ADMAN activities

CCMs (proposed date):

30.03.2010 - exact,	10% PP7-8	Croatia, Vukovar
27.04.2010,	10% PP5-6	Serbia, Belgrade
May 2010 (teoretically)	ERDFPP9	Romania, Bucharest

jointly for our common future

17th – 18th March 2010 4th WORKSHOP - BUDAPEST [donauregionen+](#) 7



Next ADMAN activities

5th Workshop - DONAUREGIONEN+

Planned in June in Romania (Bucharest) and organized by ERDFPP9 (URBANPROIECT)

????????????????????

1. **Changing the workshops**
2. **Workshop/Meeting in Bucharest financed by the partners – „accommodation incl. catering and rent“**

jointly for our common future

17th – 18th March 2010 4th WORKSHOP - BUDAPEST [donauregionen+](#) 8



Expected events/activities

1. *MoCRD (LP) will be canceled from 1.7.2010*
2. *New LP will be the Ministry of Interior of SR*
3. *Official request of new LP for the project modification - during September – October 2010*
4. *New Partnership Agreement and Subsidy Contract - during October – November 2010*
5. *Problem with submission of 3.1 PR and AoR by new LP until 31.8.2010 – LP (new or old?) will ask JTS and MA for exemption – to send 3.1 and 3.2 jointly to JTS with deadline 1.12.2010*
6. *In case of ongoing financial problems of ERDFPP9 – request for budget reallocation between partners – official request for the project modification – Subsidy Contract...*

jointly for our common future

17th – 18th March 2010 4th WORKSHOP - BUDAPEST [donauregionen+](#) 9




THANK YOU, GOOD LUCK AND DON NOT BE SAD!!!

tibor.nemeth@buid.gov.sk
donauregionen@gmail.com

jointly for our common future

17th – 18th March 2010 4th WORKSHOP - BUDAPEST [donauregionen+](#) 10

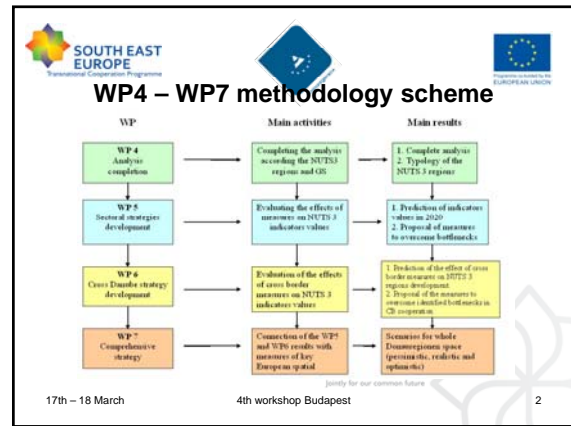

B - Final methodology framework



Final methodology framework (WP4 – WP7)

**4th Workshop - of the
DONAUREGIONEN+ project
17th and 18th March 2010
Budapest, Hungary**

Justify for our common future





WP 4 main activities and results

	Main activities	Main results
WP4	Analysis of NUTS 3 regions	1. Report of analysis of all NUTS 3 regions according the 4 GS 2. Description of the each NUTS 3 region according the 4 GS on web portal 3. Current values of chosen indicators
	Ranking of the NUTS 3 regions	1. Calculated relative weighted values of indicators (x values) 2. Ranking of the regions according the particular indicators (relative weighted values)
	Typology of the regions	The regions will be divided into different groups according the similar characteristics, based on indicator values (relative weighted values)

Justify for our common future

17th – 18 March 4th workshop Budapest 3




WP 5 main activities and results

	Main activities	Main results
WP5	Identification and summary of the relevant development documents and its measures	List of relevant documents and measures
	Assignment of the measures to the particular indicators	Set of (selected) indicators with assigned measures
	Evaluation of effect of the measures on indicators	Future relative weighted values of the indicators according the measures and probability – a basis for scenarios development
	SWOT analysis regarding the effects of the measures	Identified future bottlenecks (weaknesses, threats) which are not covered by the proposed measures
	Creating scenarios and strategies for NUTS 3 regions	Set of proposed measures and programmes to overcome identified bottlenecks

Justify for our common future

17th – 18 March 4th workshop Budapest 4




WP 6 main activities

	Main activities	Main results
WP6	Definition of CDRs according the model of time accessibility from centres of CDR	Defined areas of all 21 CDRs
	Identification of relevant stakeholders	Established working groups of stakeholders and experts for each CDR which will define strategy for CDR
	Identification of relevant documents, measures and projects with focus on cross border linkages	List of relevant documents, measures and projects
	Assignment of the measures and projects to the particular indicators	Set of (selected) indicators with assigned measures
	Quantification of the effect of cross border measures and projects on NUTS 3 region	Relative weighted values of NUTS 3 indicators as a result of the cross border measures effects
	SWOT analysis regarding the cross border linkages	Identified bottlenecks of cross border cooperation
	Identification of development scenario and strategy creation	Defined scenario according the results of SWOT, the strategy consisting of new measures to overcome bottlenecks
Evaluation of proposed measures on NUTS 3 indicators values	Relative weighted values of NUTS 3 indicators as a result of proposed measures (effect of cross border cooperation measures on whole NUTS 3 region)	

Justify for our common future

17th – 18 March 4th workshop Budapest 5



WP 7 main activities

	Main activity	Main result
WP 7	Connection of the WP5 and WP6 results with measures of key European spatial development documents	Scenarios for whole Donauregion space (pessimistic, realistic and optimistic)

Justify for our common future

17th – 18 March 4th workshop Budapest 6

C - Sectoral strategy methodology

SOUTH EAST EUROPE
Transnational Cooperation Programme

Methodology of sectoral strategy development

Dr. Lajos Veres PhD
ERDF PP 7- SASD
17 03 2010
Budapest

Justify for our common future

SOUTH EAST EUROPE
Transnational Cooperation Programme

Steps of the strategy preparation

- 1st step: Identifying set of indicators
- 2nd step: Identifying the Danube region **Analysis**
- 3rd step: Data collection
- 4th step: Position of each indicator
- 5th step: Scenarios
- 6th step: Set objectives **Strategy**
- 7th step: Connection of objectives and programs

Justify for our common future

SOUTH EAST EUROPE
Transnational Cooperation Programme

SWOT analysis

```

    graph TD
      SWOT[SWOT analysis] --> OT[Opportunities, threats]
      SWOT --> SW[Strengths, weaknesses]
      OT --> EEF[Evaluation of the external factors]
      SW --> IFT[Internal factors of the territory]
      EEF --> DD[Development directions]
      EEF --> KSH[Key stake holders]
      EEF --> C[Competitors]
      IFT --> ER[Endogen resources]
      IFT --> PS[Present strategies]
      IFT --> IT[Institutions, tools]
    
```

Justify for our common future

SOUTH EAST EUROPE
Transnational Cooperation Programme

4th step: Position of each indicator

Suggestion: using a numerical classification and using a graphic representation to show the results of the SWOT analysis

Justify for our common future

SOUTH EAST EUROPE
Transnational Cooperation Programme

Four different strategies

Different strategies have to be applied according to the position of the factors in the frame of reference:

- I. Factors situated in sector I. of the frame of reference are the so called breakout points, that support **offensive strategy**.
- II. Factors placed in sector II. require a **diversified strategy**.
- III. This sector shows, we need to apply a **switched strategy**.
- IV. In the case of the factors situated in sector IV. emergency actions must be taken, **defensive strategy** is required.

Justify for our common future

SOUTH EAST EUROPE
Transnational Cooperation Programme

Determination of x and y values

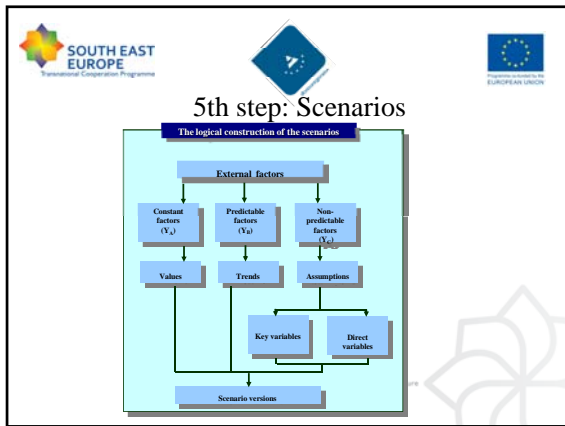
The optimal development strategy is determined first by the internal factors of the analyzed region and further on by taking into account the opportunities and threats of the external environment.

First step: X value may vary between +3 and -3, depending on whether the given factor might be considered strength (+) or weakness (-).

Second step: Determination of Y value. In the case of every factor the opportunities and the treats are evaluated and positioned on a scale with a +3/-3 scale. The YB value can be one value or two independent values.

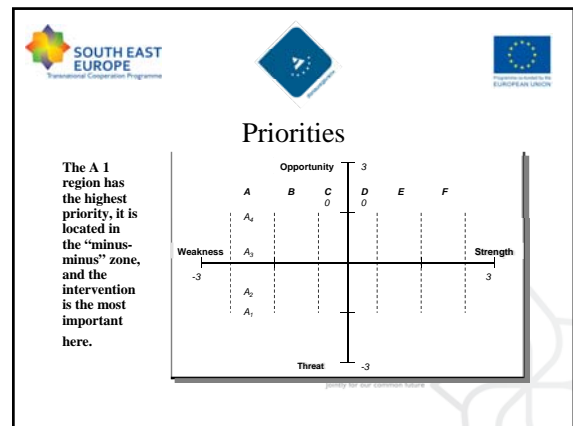
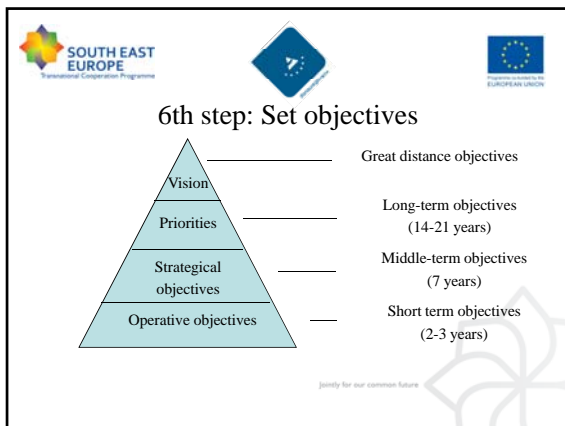
We can evaluate the factor in text (commentary). For comparison we can use the average of EU 27, if we can.

Justify for our common future



Different scenarios depend on the Y value

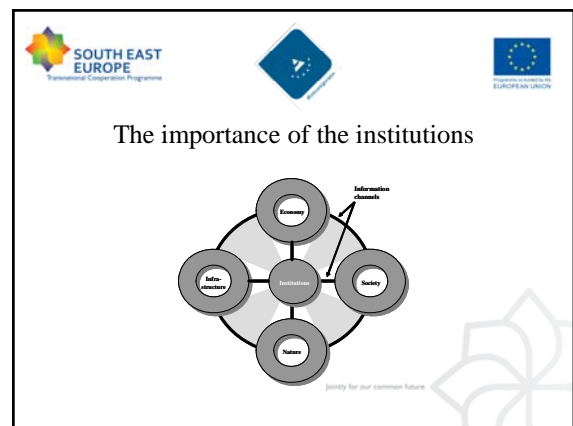
- The Y values can be different and its different combinations result in different scenarios.
- The time frame must be set for the expected changes. Usually 1 period is 7 years.

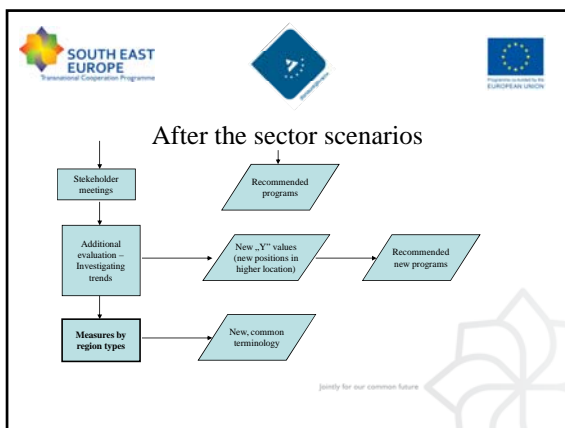
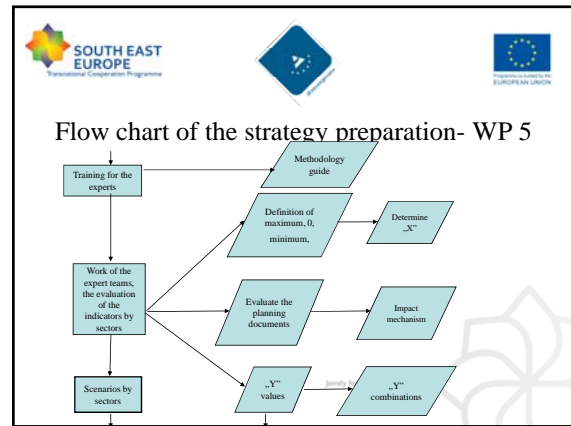
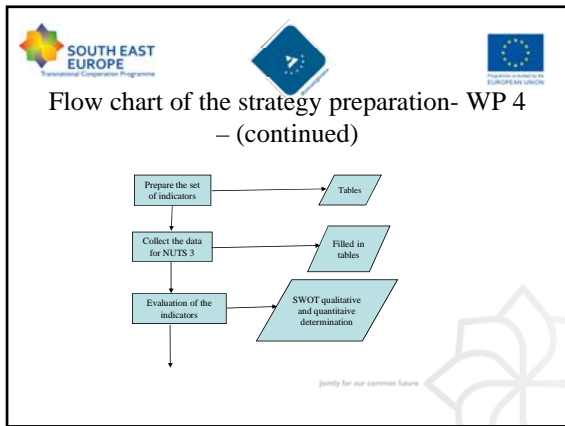


7th step: Connection of objectives and programs

Programmes	Objectives
	O1.....O4.....ON
P 1	
P 2	
.	
P 5	
.	
P M	

Those programmes are efficient which support more objectives at the same time.





By the end of WP 4

- End of the analysis
- Evaluation of strengths and weaknesses
- Potentials and gaps (what is missing?) should be clearly defined in the text part (as it is needed for the strategy)

The X and Y values for the required indicators




Indicator	Description	Unit	Value
Water pollution index	an index demonstrating for water pollution evaluation will be developed	index	
... (many rows follow) ...			

Impact mechanism for the strategy - evaluating the planning documents

No.	Name of the document	Chosen measure	Relevant indicators	Relevant NUTS 3
	A	B	C	D
1				
2				
3				
4				
5				
6				
7				
8				
etc.				

Comments: A - national, regional, cross-regional, country, city level documents
 B - the name of the measure which has impact on the indicators (e.g. improvement the water management system of the Danube)
 C - name of the indicator from the measure (e.g. water quality)
 D - the NUTS 3 region which is affected by the indicator (e.g. Komárom-Esztergom county)
 Source: Indicators for Monitoring and Evaluation. An indicative methodology. EUROPEAN COMMISSION 1999




C1 - WP5 Case study NSK

WP5 – Case study of Nitra Self-governing County

4th Workshop - of the DONAUREGIONEN+ project
17th and 18th March 2010
Budapest, Hungary

Jointly for our common future








Objective

- determine current position and position in 2020 for each NUTS3 region within Donauregionen area:
 - For each indicator
 - For General Schemes
- set up a development strategy and propose the reasonable measures/activities

Jointly for our common future

17th – 18th March 2010 4th Workshop, Budapest 2








Indicators (1)

- **GS Natural conditions**
 - Water pollution Index
 - Atmosphere pollution SO₂ - emission in tons for 1000 inhabitants
 - Atmosphere pollution NO_x - emission in tons for 1000 inhabitants
 - Atmosphere pollution ash - emission in tons for 1000 inhabitants
 - Atmosphere pollution CO - emission in tons for 1000 inhabitants
 - Number of landfills

Jointly for our common future

17th – 18th March 2010 4th Workshop, Budapest 3








Indicators (2)

- **GS Settlement Structure and Human Resources**
 - Number of dwellings per 1 000 inhabitants
 - Number of university students per 1 000 inhabitants
 - Regional vitality index

Jointly for our common future

17th – 18th March 2010 4th Workshop, Budapest 4








Indicators (3)

- **GS Transport**
 - Road Transport – Density of Highways
 - Railway Transport – Density of Railways
 - Water Transport – freight transferred
 - Water Transport – accessibility of ports
 - Air Transport – airports accessibility

Jointly for our common future

17th – 18th March 2010 4th Workshop, Budapest 5






Indicators (4)

- **GS Technical Infrastructure**
 - Electric energy supply
 - Natural gas supply
 - Broadband (internet connection, >256 kbit/s)
 - Drinking water supply
 - Wastewater treatment
 - Renewable energy sources

Jointly for our common future

17th – 18th March 2010 4th Workshop, Budapest 6




Indicators (5)

- **GS Economy**
 - Regional GDP per capita in PPS as a share of EU 27(25) average (%)
 - Labour force participation rate (%)
 - Unemployment rate in region (%)
 - Number of employed in tertiary branch (%)
 - Share of college and secondary school educated inhabitants
 - Tourism - average guest nights
 - Tourism - foreign visitors

Justify for our common future

17th – 18th March 2010 4th Workshop, Budapest 7




X values

- Calculation of X values:

$$X = [(Value_i - Value_{min} / Value_{max} - Value_{min}) - 0,5] * 6$$
- X values determine the current state of the indicator within Donauregionen area,
- For this case study we have used indicators values for the year 2005 (from Donauregionen project).

Justify for our common future

17th – 18th March 2010 4th Workshop, Budapest 8



Y values

1. Identification and collection of relevant documents
2. Identification of relevant measures/activities
3. Determination (quantification) of influence of these measures on individual indicators development (referred to 2020)
4. Calculation of change in time:
 - individual indicators
 - Individual General Schemes

Justify for our common future

17th – 18th March 2010 4th Workshop, Budapest 9



Identification of relevant documents (1)

- In Nitra Self-governing County we have identified:
- **National level:**
 - Regional operational Program,
 - Operational Program – Environment,
 - Operational Program – Informatization of Society,
 - Operational Program – Transport,
 - Operational Program – Competitiveness and Economy Growth,
 - Operational Program – Employment and Social Inclusion,
 - Program of Crossborder Cooperation – HU-SK,
 - Strategy for better utilization of Renewable energy sources in Slovakia

Justify for our common future

17th – 18th March 2010 4th Workshop, Budapest 10




Identification of relevant documents (2)

- **Regional level:**
 - Program of Economy and Social Development of Nitra Self-governing County,
 - Action Plan of Development of Nitra Self-governing County,
 - Development Strategy of Tourism in Nitra Self-governing County,
 - Physical Transport General of Nitra Self-governing County,
 - Physical Plan of Nitra Self-governing County
- **Local level:**
 - Program of Economy and Social Development of Komárno
 - Program of Economy and Social Development of Nové Zámky

Justify for our common future

17th – 18th March 2010 4th Workshop, Budapest 11

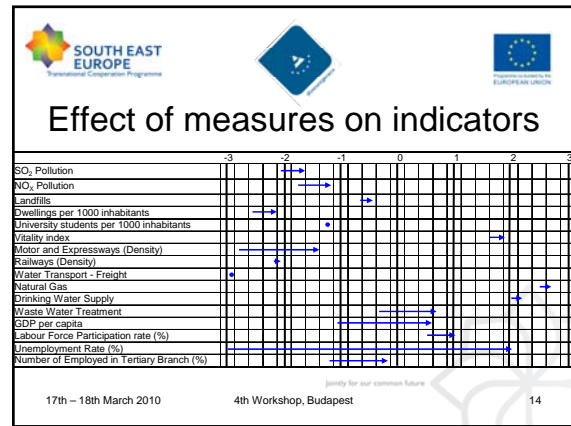


Identification of relevant measures

- Measures, which influence on the indicators value in the future (2020).
- More than 100 measures were identified.

Indicator	Measure/activity
Wastewater treatment	Construction, extension and capacity increase of sewer networks
	Construction, extension and capacity increase of sewage treatment plants
	Increasing of number of municipalities with sewer networks according to EU requirements

Indicator	Value	Value X	Value Y	Indicators value	
				Predict to 2020	Min. / Max.
gs Atmosphere pollution SO ₂	7,000	-2,077	-1,615	1,000	40,000
nc Atmosphere pollution NO _x	8,000	-1,769	-1,154	0,000	39,000
Landfills	11,000	-0,692	-0,462	1,000	27,000
ss Dwellings per 1 000 inhabitants	326,760	-2,561	-2,109	304,159	613,000
hr University students per 1 000 inhabitants	37,921	-1,270	-1,270	0,000	131,500
VI Vitality Index	110,355	1,600	1,900	51,400	128,300
TT Motor and Expressways (Density)	0,003	-2,836	-1,364	0,000	0,110
Railways (Density)	0,031	-2,177	-2,044	0,000	0,226
Water Transport - freight transferred	374 704	-2,963	-2,961	0,000	60 828 000
Natural gas	91,500	2,490	2,700	0,000	100,000
Drinking water supply	87,300	2,071	2,268	18,000	100,000
Wastewater treatment	42,880	-0,312	0,761	0,000	95,710
E Regional GDP per capita in PPS as a share of EU 27(25) average (%)	50,000	-1,074	0,686	11,720	131,000
Labour force participation rate (%)	57,800	0,546	1,064	39,300	70,600
Unemployment rate in region (%)	17,800	-3,000	2,051	2,000	17,800
Number of employed in tertiary branch (%)	31,650	-1,274	-0,266	17,350	67,050



Problems

- A lot of measures – difficult to find the „right“ measures
- Sometime it is difficult to quantify their impact on the indicator
- Some of indicators have not to be covered with measures/activities in planning documents

17th – 18th March 2010 4th Workshop, Budapest 15

Thank you for your attention.

17th – 18th March 2010 4th Workshop, Budapest 16

C2 - WP5 Case study Komarom-Esztergom

SOUTH EAST EUROPE
Transnational Cooperation Programme

Case study WP5
Komárom-Esztergom County
in the Donauregionen+ project

Márton Lendvay
ERDF PP 7- SASD
17 03 2010
Budapest

Jointly for our common future

SOUTH EAST EUROPE
Transnational Cooperation Programme

Introduction

- Value X
- Value Y
- Strategy
- Scenarios

Jointly for our common future

SOUTH EAST EUROPE
Transnational Cooperation Programme

Value X

- Natural conditions
- Settlement Structure & Human Resources
- Transport & Technical infrastructure
- Economy

- Data of Donauregionen, 2004
- Changes since Donauregionen: more emphasis on the **impact**
 - Air transport freight → Air Transport - airports accessibility

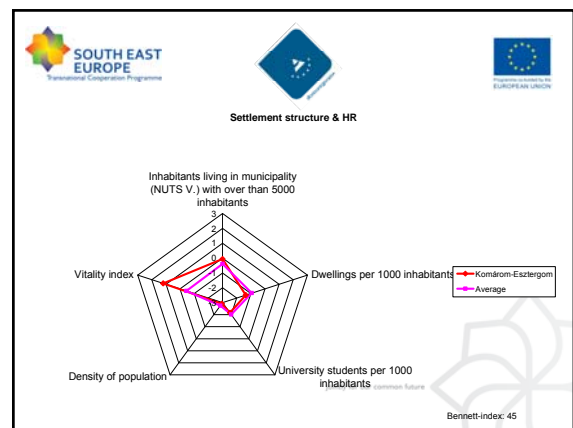
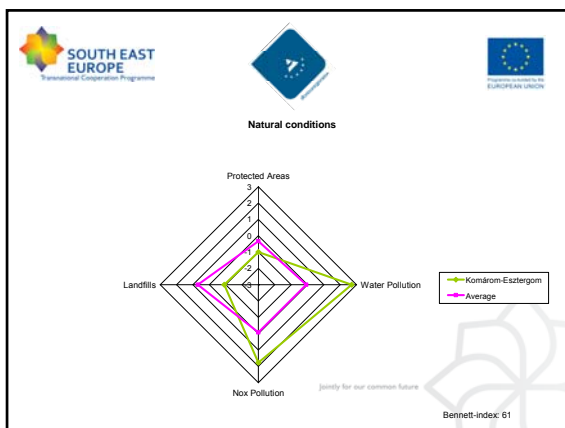
Jointly for our common future

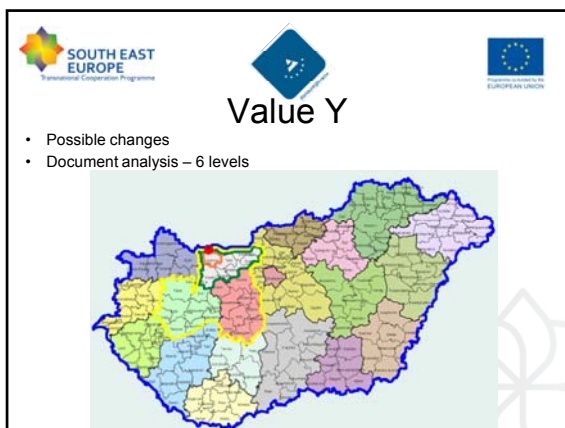
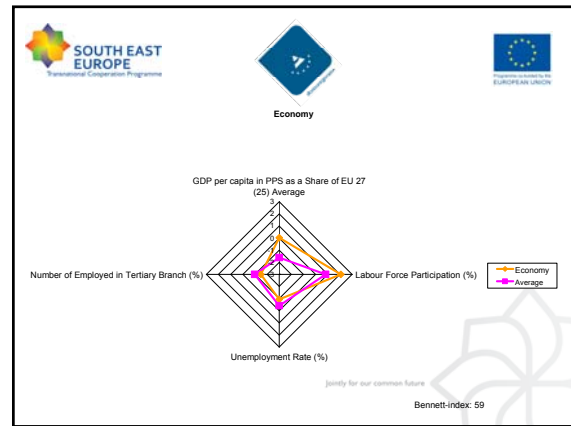
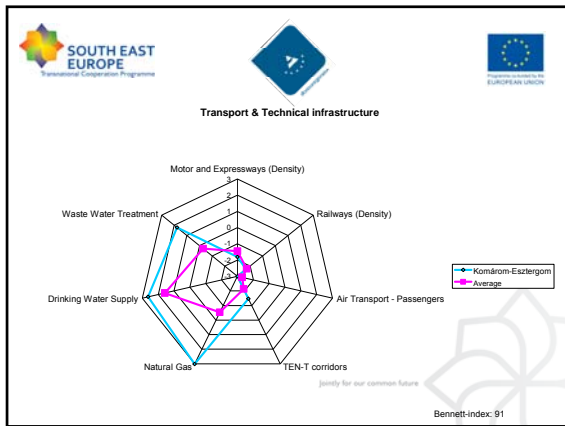
SOUTH EAST EUROPE
Transnational Cooperation Programme

Value X

- Current state of the indicator
- Method of calculating X
 - $[(Value_i - Value_{min}) / (Value_{max} - Value_{min}) - 0,5] * 6$

Jointly for our common future





- National Settlement Development Conception
- Mid-Transdanubia Operational Programme
- Regional Strategic Programme
- Mid-Transdanubia Region Regional Development Programme
- Komárom-Esztergom County Regional Development Conception and Strategic Programme
- Komárom-Esztergom County Tourism Development Strategy
- Komárom-Esztergom County II. Environmental Protection Programme
- Feasibility Chances of Nature Parks in Komárom-Esztergom County
- Komárom-Bábolna Small Region Regional Development Conception and Programme
- Ister-Granum Strategy
- Komárom Tourism Aim Settlement Development Conception
- Komárom Local Waste Management Plan
- Komárom Environmental Protection Programme
- Komárom Town Medium-term Town Development Conception
- Komárom Integrated Town Development Strategy
- Komárom Danube-bank Development Strategy Study

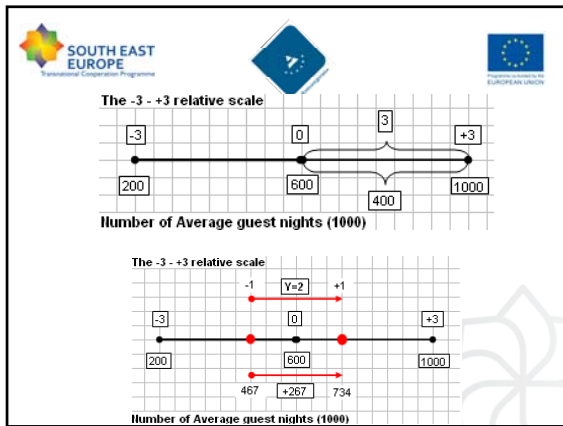
First step

Mid-Transdanubia Operational Programme	Development of "King Cities" (Esztergom, Tata)	GDP per capita, Labour Force Participation (%), Unemployment Rate (%), Number of Employed in Tertiary Branch (%)
	Conscious development of rural towns	Density of population, GDP per capita, Inhabitants living in municipality (NUTS V.) with over than 5000 inhabitants
	Complex catchment basin management (Által-ér)	Water pollution

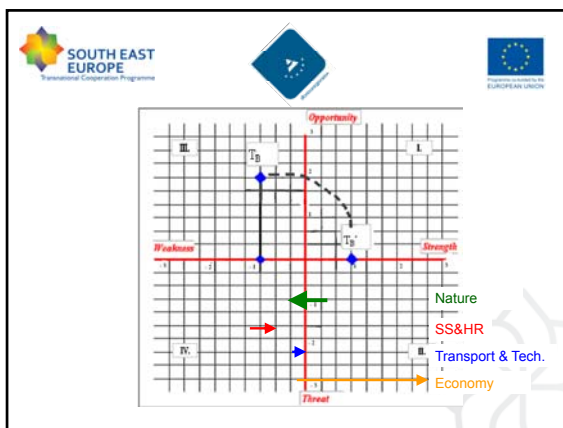
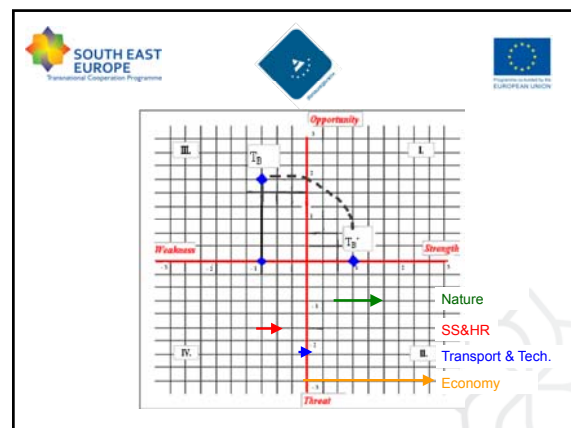
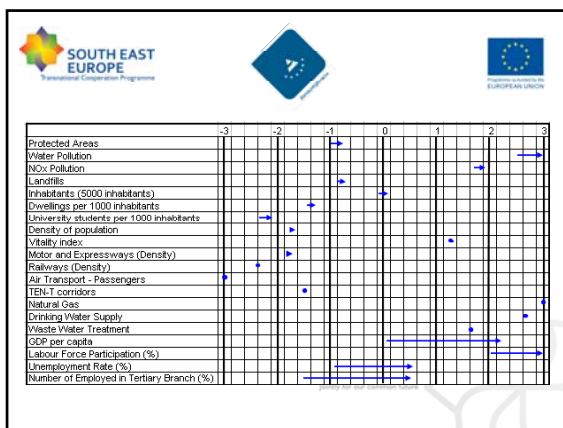
Justify for our common future

Second step

GDP per capita in PPS as a Share of EU 27 (25) Average				
Measure name	Y current (100% probability)	Y a (75% probability)	Y b (50% probability)	Y c (25% probability)
Highway development (M81 Komárom, M10 Esztergom)				0,4
New Danube bridge (Komárom-Komárno)		0,4		
The development of the Thermal bath with a new hotel based on the bath			0,3	
Esztergom-Sturovo freight ferry				0,1



General scheme	Indicator	X axis values - strength / weakness		Y axis values - opportunities / threats referred to 2020			
		Value	Y current (100% probability)	Y+ (75% probability)	Y+ (50% probability)	Y+ (non predictable)	
Urban Clusters	Protected Areas	-3,000	-1,000	0.5	0.5	0.2	
	Water Pollution	38,000	2,000	0.8	1	1	
	NOx Pollution	31,000	1,700	0.1	0.6	0.6	
	Landfills	10,000	-923	0.5	0.6	0.6	
Risks	Inhabitants (5000 inhabitants)	66,000	-2,000	0.3	0.3	0.2	
	Dwellings per 1000 inhabitants	389,000	-1,300	0.4	0.4	0.4	
	University students per 1000 inhabitants	18,400	-9,100	0.4	0.3	0.4	
	Density of population	139,000	-2,919	0.2	0.2	0.3	
	Health index	105,000	1,190				
Transport & Infrastructure	Motor and Expressways (Density)	0,022	-1,800			0.6	
	Railways (Density)	0,026	-2,323			0.6	
	Air Transport - Passengers	0,000	-3,000			0.6	
	TEN-T corridors	0,073	-1,464			0.6	
	Natural Gas	100,000	3,000			0.6	
	Drinking Water Supply	94,930	2,025			0.6	
Economy	Waste Water Treatment	78,140	1,773			0.6	
	Regional GDP per capita in PPP as a share of EU (27) average (%)	72,000	0,030	0.5	2.1	2.8	
	Labour force participation rate (%)	65,700	2,201	2	1.8	1.9	
	Unemployment rate in region (%)	7,400	-0,969	2	2	1.6	
Number of employed in tertiary branch (%)	29,900	-1,884	2	2.8	1.6		

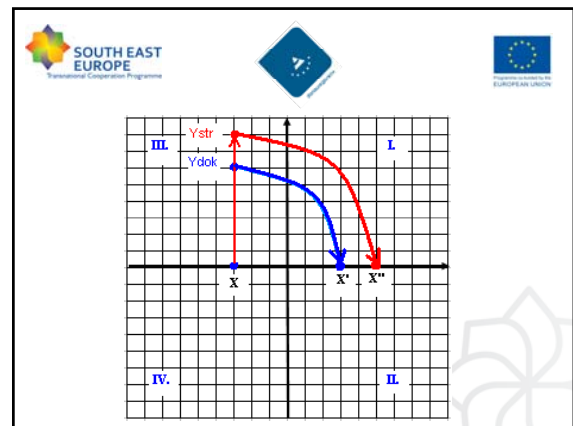
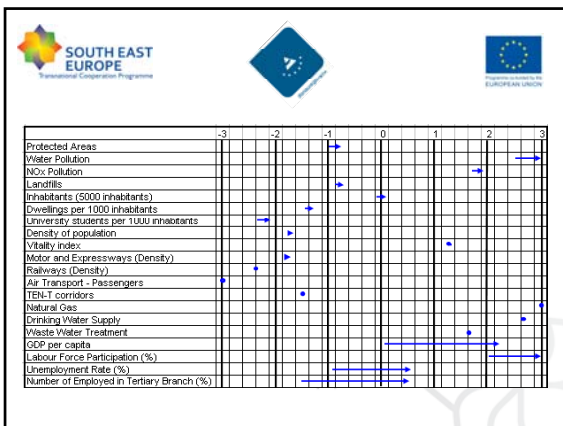
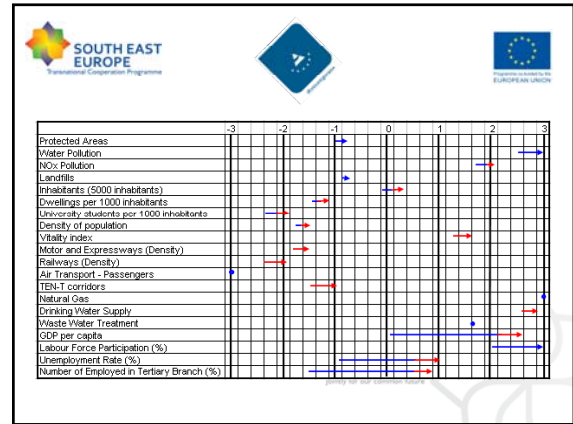


SWOT analysis


<p>Strength</p> <ul style="list-style-type: none"> +Location +Infrastructure +Transnational enterprises +Industrial parks +Euroregions 	<p>Weakness</p> <ul style="list-style-type: none"> +Few bridges over Danube +Few ports +Tourism (attractions) +Utilization of Danube +R&D potential
<p>Opportunity</p> <ul style="list-style-type: none"> +Cross-border cooperation +Shipping +Ecology +Development of transport systems +Clusters, industrial integration +Cultural heritage 	<p>Threat</p> <ul style="list-style-type: none"> +Many organizations +Unharmonized development actions +Subordinate role in the Mid-Transdanubian Region +Higher competitiveness of Slovakia +Risk of drinking water pollution

Strategy

Programs	Objectives				
	Education	Labour force	Water reserving capacity, irrigation	Economic competitiveness	Accessibility, connectivity
Education					
Vocational training					
Languages					
Water management					
Water reservoir					
Canal lines					
Organizational development					
Tourism Destination Management organization					
Development clusters					
Transport infrastructure					
Bridges					
Railways					
Logistic centres					




D - WP6 Methodology



WP 6 methodology

4th Workshop - of the DONAUREGIONEN+ project
17th and 18th March 2010
Budapest, Hungary

Identify for our common future




WP 6 Crossdanube strategy development

WP 6

- will evaluate the effects of cross Danube measures and linkages within CDR on NUTS 3 region, in which the particular CDR is located
- will propose the measures to overcome existing bottlenecks in CDRs, in order to contribute to the development of the NUTS 3 regions by improving and strengthening Crossdanube linkages

Identify for our common future

17th – 18 March 4th workshop Budapest 2




WP 6 Crossdanube strategy development

1st step

- Definition of CDRs according the model of time accessibility from centres of CDR
- Each CDR is defined by its centres, the area of the CDR will be determined by the time accessibility (agreed unit of time) regarding the transport network

Identify for our common future

17th – 18 March 4th workshop Budapest 3




WP 6 Crossdanube strategy development

2nd step

- Identification of key stakeholders (regional self-government, municipal self-government (of major settlements), regional development agencies, euro regions, major private companies)
- Establishing of the working groups consisting of the representatives of the key stakeholders and project experts
- Agreement on schedule of the meetings of working groups

Identify for our common future

17th – 18 March 4th workshop Budapest 4




WP 6 Crossdanube strategy development

3rd step

- Identification of relevant documents, measures and projects with focus on cross border linkages
- Assignment of the measures and projects to the particular indicators
- Some of the measures can affect more than 1 indicator (positively as well as negatively) and the most of the indicators will be affected by more than 1 measure, while some indicators can remain uncovered by the measures
- (We are working with modified set of indicators, the same as in WP5)

Identify for our common future

17th – 18 March 4th workshop Budapest 5




WP 6 Crossdanube strategy development

4th step

- Quantification of the effect of cross border measures and projects on NUTS 3 region through relative weighted values of NUTS 3
- The relative weighted values are based on the evaluation of experts, and calculated according the method used in WP5
- SWOT analysis of the CDR regarding the cross border linkages
- Identification of bottlenecks – fields not covered by the measures
- Identification of the disparities between the opposite, cross Danube sides of the CDR (disparities between NUTS3 regions in which the CDR is located)

Identify for our common future

17th – 18 March 4th workshop Budapest 6




WP 6 Crossdanube strategy development

5th step

- Identification of development scenario for CDR, according the predominant values of indicators (y values)
- CDR strategy development – proposal of the new measures with cross Danube effect in order to overcome existing bottlenecks

17th – 18 March 4th workshop Budapest 7




WP 6 Crossdanube strategy development

6th step

- Evaluation of new proposed measures on NUTS 3 indicators values („new“ y values)
- Relative weighted values of NUTS 3 indicators as a result of proposed measures (effect of cross border cooperation measures on whole NUTS 3 region)

17th – 18 March 4th workshop Budapest 8



Specific features of WP6

Focus on the evaluation performed by the stakeholders and experts within the working groups

Assessment of the effects of the Crossdanube linkages and measures within CDR through the changes in the values of indicators at the level of NUTS 3 regions

17th – 18 March 4th workshop Budapest 9



THANK YOU FOR YOUR ATTENTION !

17th – 18 March 4th workshop Budapest 10

D1 - Identifying key projects, priorities, and actors

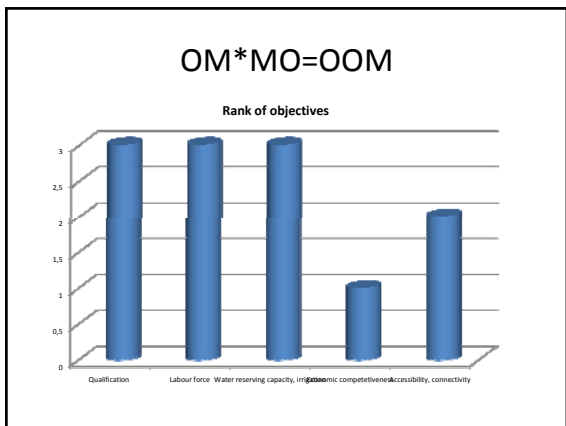
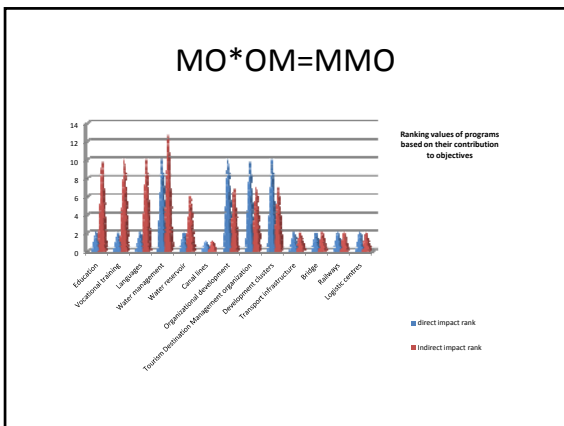
Identifying key projects, priorities, and actors of key importance

- Starting points are the tables of
- Measures / objectives = target table (MO)
 - Measures / evaluation criteria = importance table (ME)
 - Measures / actors (stakeholders) = interest table (MI)

- Selecting key elements
- Multiplying matrices
 - MO*OM=MMO – key measures based on objectives
 - OM*MO=OOM – key objectives based on measures
 - ME*EM=MME – key measures based on evaluation criteria
 - EM*ME=EEM – key criteria based on measures
 - MI*IM=MMI – key measures based on the interest of stakeholders
 - IM*MI=IIM – key actors based on measures

Komárom example

Program	Objectives				
	Qualification	Labour force	Water reserving capacity, irrigation	Economic competitiveness	Accessibility, connectivity
Education					
Vocational training	x	x			
Languages	x	x			
Water management					
Water reservoir			x	x	
Canal lines			x	x	x
Organizational development					
Tourism Destination Management organization				x	
Development clusters				x	
Transport infrastructure					
Bridge				x	x
Railways				x	x
Logistic centres				x	x



D2 - CDR Komárom-Komarno

SOUTH EAST EUROPE
Transnational Cooperation Programme

CDR Komárom-Komárno

Márton Lendvai
ERDF PP 7- SASD
18 03 2010
Budapest

SOUTH EAST EUROPE
Transnational Cooperation Programme

Cross Danube regions

To develop crossdanube and crossborder growth poles of regional importance

SOUTH EAST EUROPE
Transnational Cooperation Programme

Cross Danube regions

SOUTH EAST EUROPE
Transnational Cooperation Programme

Cross Danube regions

Programs	Objectives				
	Qualification	Labour force	Water reserving capacity, irrigation	Economic competitiveness	Accessibility, connectivity
Education	x	x			
Vocational training	x	x			
Languages	x	x			
Water management			x	x	
Water reservoir			x	x	
Canal lines			x	x	x
Organizational development				x	
Tourism Destination				x	
Management organization				x	
Development clusters				x	
Transport infrastructure				x	x
Bridge				x	x
Railways				x	x
Logistic centres				x	x
Cross Danube region		x		x	x

SOUTH EAST EUROPE
Transnational Cooperation Programme

Cross Danube regions

BORDERING


- Core-area (e.g. twin cities)
- Potential area
 - Accessibility and transport corridors (GIS)
 - Clusters, logistic zones, commuting area
 - Expert evaluation

SOUTH EAST EUROPE
Transnational Cooperation Programme

Cross Danube regions

STRATEGY

- Using results of WP3, WP4 and WP5
- Analysis of indicators (if possible)
- Selection of measures concerning the area from documents
- SWOT, Stakeholder conferences & working groups - complex measures
- Measures from top-down approach
- Role of iteration



Cross Danube regions

PROPOSED MEASURES

- Development of EGTC (European Grouping of Territorial Cooperation) by organization and number of participants
- New bridge (and transportation system as an all)
- Entrepreneur Clusters
- Co-operation in tourism destination management
- The involvement of proposed measures in local plans

Jointly for our common future

E - WP7 Working procedure




The Spatial Development Concept of Interregional Co-operation in the Danube Space
DONAUREGIONEN+

**WP7
COMPREHENSIVE STRATEGY
- working procedure**

4th Workshop - of the DONAUREGIONEN+ project
17th and 18th March 2010
Budapest, Hungary
Vojtech Hrdina


Jointly for our common future



**Steps of preparing of the
„Comprehensive Strategies in
the Donauregionen Area”**

17th and 18th March 2010, Budapest

Jointly for our common future



0. Preparation of content for National background reports:

1. National background reports (prepared by national teams)
2. First draft of D+ scenarios for the comprehensive document (prepared by the task force)
3. Draft of comprehensive strategies (prepared by the task force)
4. Negotiations – remarks, supplements and particularisation to the draft text (prepared by national members of working team)
5. Preparation of final draft of the document (prepared by the task force)
6. Preparation of final text of the document (prepared by the WP1)

Jointly for our common future


17th and 18th March 2010, Budapest



**1. National background reports
(prepared by national teams)**

Jointly for our common future

17th and 18th March 2010, Budapest



analysis and comparisons

- Brief SWOT analysis
- Definition of indicators characterizing the social-economic situation of the whole Donauregionen Area
- The analysis and the evaluation of the national regional policies and spatial plans of the countries
- Donauregion and the European and national development policies
 - Review the adaptation of the ESDP in the area
 - Review the ESPON-project in the area
 - Review the other relevant projects in the area
- Analysis of several transnational initiatives

national scenarios

Jointly for our common future

17th and 18th March 2010, Budapest



**2. First draft of D+ scenarios for
the comprehensive document
(prepared by the task force)**

- 1st draft text
- national backward information prepared by working team

Jointly for our common future

17th and 18th March 2010, Budapest



3. Draft of comprehensive strategies (prepared by the task force)

- ▣ analysing backward information from working team to the step 2
- ▣ draft as an overall text + tables + schemes

Jointly for our common future

17th and 18th March 2010, Budapest




4. Negotiations on the national levels

- ▣ remarks, supplements and particularisation to the draft text prepared by national members of working team

Jointly for our common future

17th and 18th March 2010, Budapest




5. Preparation of final draft of the document (prepared by the task force)

- ▣ analysing backward information from national teams to the step 3
- ▣ final draft as an overall text

Jointly for our common future


17th and 18th March 2010, Budapest



6. Preparation of final text of the document (prepared by the WP1)

Jointly for our common future


17th and 18th March 2010, Budapest



Activity	Time
0. Preparation of content for National background reports:	April – June 2010
Workshop 5 (Bucuresti)	June 2010
1. National background reports (prepared by national teams):	July – ½ of December 2010
• analysis and comparisons	July – ½ of September 2010
Workshop 6 (Vojvodina)	September 2010
• national scenarios	October – ½ of December 2010
Workshop 7 (Bratislava)	December 2010

Jointly for our common future

17th and 18th March 2010, Budapest



Activity	Time
2. First draft of D+ scenarios for the comprehensive document (prepared by the task force)	½ of December 2010 – ½ of March 2011
• 1st draft text	½ of December 2010 – ½ of February 2011
1 st conference (Budapest)	February 2011
• national backward information prepared by working team	½ of February 2011 – ½ of March 2011
Workshop 8 (Kishinev)	March 2011

Jointly for our common future

17th and 18th March 2010, Budapest

Activity	Time
3. Draft of comprehensive strategies (prepared by the task force)	½ of March 2011 – ½ of June 2011
• analysing backward information from working team to the step 2	½ of March 2011 – End of April 2011
• draft as an overall text + tables + schemes	May 2011 - ½ of June 2011
Workshop 9 (Sofia)	June 2011

17th and 18th March 2010, Budapest

Activity	Time
4. Negotiations – remarks, supplements and particularisation to the draft text of the national members of working team	½ of June 2011 – ½ of September 2011
Workshop 10 (Resita)	September 2011
5. Preparation of final draft of the document	½ of September 2011 – 1/2 of December 2011
• analysing backward information from working team to the step 3	½ of September 2011 – ½ of November 2011
• final draft as an overall text	½ of November 2011 – 1/2 of December 2011
Workshop 11 (Nitra)	December 2011

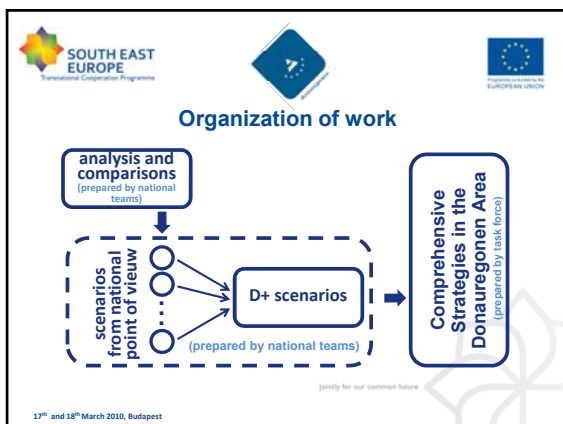
17th and 18th March 2010, Budapest

Activity	Time
6. Preparation of final text of the document by WP1	1/2 of December 2011 – January 2012
2 nd conference (Bratislava)	March 2012

17th and 18th March 2010, Budapest

Task force for WP7

17th and 18th March 2010, Budapest



TASK FORCE	Country SK				Country HU				Country BG
	ERDFPP1	ERDFPP2	ERDFPP3	ERDFPP4	ERDFPP5	ERDFPP6	ERDFPP7	ERDFPP8	
	7.1 Analysis and Comparison	Peter Tomášek Július Hanus	done by ERDFPP1	done by ERDFPP1					
7.2 Scenarios	Vojtech Hrdina	done by ERDFPP1	done by ERDFPP1						
7.3 Conclusions and Recommendations	Vojtech Hrdina Július Hanus	done by ERDFPP1	done by ERDFPP1						

17th and 18th March 2010, Budapest

